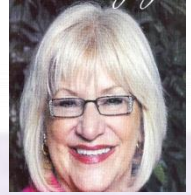




## A Message from Kathy Rometty, FWF's New President

I'm ready to get started as President for the 2012-2013 fiscal year and I assure you I bring lots of enthusiasm. During the last five years I have continued to have a strong and passionate desire to mentor and support other women in our community and in the business genre. As your president, I will strive to have "educational programs and the exchange of ideas, experiences and resources, the members contribute to one another's professional advancement, increase the visibility of women leaders, and facilitate the effectiveness of women in the community." as stated in our Purpose Statement. I hope to create a safe and comfortable atmosphere for all members to benefit. Please contact me any time with questions, concerns or ideas; I would love to hear from each and every one of you. United we can accomplish more.



## Procedures for Guests & New Membership Incentives

We welcome any guests of members who are considering membership to attend a Flint Women's Forum's monthly luncheon. The first time a guests attends, their lunch is free. Guests are allowed two additional times to attend the luncheons at the guest rate. After the third time attending the luncheon, the guest is welcome to fill out a membership application to join the Forum. Unfortunately, we cannot allow a continue to attend the meetings on a regular basis without full becoming a member. Membership is only \$75.00 per year and applies to individuals and not companies.

As an incentive for membership recruitment, any member who sponsors a new member is entitled to a certificate good for one free lunch at a regular meeting. Certificates are distributed upon new member induction.

Thank you!  
Dian Panter ~ Membership Chair

## FWF Mission

The Flint Women's Forum brings together people of professional achievement and influence. Through educational programs and the exchange of ideas, experiences and resources, the members contribute to one another's professional advancement, increase the visibility of women leaders and facilitate the effectiveness of women in the community.

## Birthdays

- Kathy Rometty – August 18
- Diane Kropelnitski – August 25
- Marilyn Alvey – August 29

## Anniversaries

- Marilyn Alvey – 2 Years
- Mona Hendrickson – 6 Years
- Ruth Kramer – 18 Years
- Karen McIntosh – 2 Years
- Kathy Rometty – 4 Years
- Elaine Scherba – 2 Years



## McLaren to Offer Free Community Skin Cancer Screening

McLaren Flint and the McLaren Cancer Institute-Flint are offering a free skin cancer screening to the general public on Wednesday, August 29. Full body screenings will be performed by area dermatologists and internal medicine physicians and residents from McLaren Flint. Registration is required. Skin Cancer is the most common form of cancer in the United States. The most serious type of skin cancer, malignant melanoma, will result in nearly 9,000 deaths this year.

- **Wednesday, August 29**
- **3 p.m. to 5:30 p.m.**
- **McLaren Medical Education Building, G-3230 Beecher Rd.**
- **General public invited**
- **Free**
- **Registration required, please call McLaren Connect toll free at 1-877-625-2736.**

Most skin cancers, including melanoma, can be cured if detected early.

## Lunch Meetings

### August Lunch Meeting

Tuesday, August 21 at noon at the Flint Golf Club  
Cost is 17.00 for FWF members. \$20 for returning guests.  
Speaker is Jennifer Kayden of IAM Limited  
RSVP to [FlintWomensForum@gmail.com](mailto:FlintWomensForum@gmail.com) by August 17<sup>th</sup>.



### September's Meeting

September lunch meeting will be Tuesday, September 18<sup>th</sup> at noon at the Flint Golf Club. The speaker will be Pam Murdock from Business Coach from Murdock & Associates.

### June's Meeting Recap

Our last membership meeting was on June 19<sup>th</sup>. Lisa Szukhent from StyleEye Midwest talked about "Dressing For Success: How to Actually Find Something in Your Closet".

\*\*\* In the interest of schedules we try and begin our meetings promptly. So please feel free to come early to get settled and mingle prior to the meetings.\*\*\*

## Connect With Us!



[facebook.com/flintwomensforum](https://facebook.com/flintwomensforum)  
[twitter.com/flintwomensforum](https://twitter.com/flintwomensforum)  
[linkedin.com/groups/Flint-Womens-Forum](https://linkedin.com/groups/Flint-Womens-Forum)  
[flintwomensforum@gmail.com](mailto:flintwomensforum@gmail.com)

**FOCUS** is a monthly publication of Flint Women's Forum. Submissions are welcomed and appreciated. Please send entries to Michelle Shook, Communications Chair at [Cherv16@yahoo.com](mailto:Cherv16@yahoo.com)



## Membership

Membership in the Flint Women's Forum is open to those who demonstrate leadership in their fields of endeavor, who believe in the purpose of the Women's Forum, who will participate actively, and who are effective in an extended network. The Flint Women's Forum values professional and community involvement. Membership is only \$75.00 per year, per member. Full criteria and applications can be found on our website at [www.flintwomensforum.org](http://www.flintwomensforum.org).

### 2012- 2013 Board Members

#### President

Kathy Rometty  
(810) 762-9960 x105  
[krometty@goodwillmidmichigan.org](mailto:krometty@goodwillmidmichigan.org)

#### President-Elect

Ruth Kramer  
(810) 625-1067  
[ruthakramer@comcast.net](mailto:ruthakramer@comcast.net)

#### Past President

Sherry Stewart  
(810) 342-4477  
[sherryst@mclaren.org](mailto:sherryst@mclaren.org)

#### Secretary

Kelly Crystal  
(810) 603-8162  
[Kelly.Crystal@ml.com](mailto:Kelly.Crystal@ml.com)

#### Treasurer

Stephanie Zemore  
(810)-733-5140  
[stephanie@financialtaxplan.com](mailto:stephanie@financialtaxplan.com)

#### Program Chair

Teresa McClelland-Sargent  
(810) 733-5140  
[teresa@financialtaxplan.com](mailto:teresa@financialtaxplan.com)

#### Membership Chair

Dian Panter  
(810) 659-5500  
[dpanter@pmcworks.inc](mailto:dpanter@pmcworks.inc)

#### Communications Chair

Michelle Shook  
(810) 625-6042  
[Cherv16@yahoo.com](mailto:Cherv16@yahoo.com)

#### Member at Large

Marilyn Alvey  
[maralvey@yahoo.com](mailto:maralvey@yahoo.com)

### On Target Again

Ruth Kramer, a long time member of FWF and the current President-Elect, has re-started her company Target Promotions. Target Promotions is known for superb quality promotional items to advertise any business. For information or catalogs on items, contact Ruth at (810) 625-1067 or [ruthakramer@comcast.net](mailto:ruthakramer@comcast.net).

### Board Notes

The last FWF Board Meeting was held on August 7, 2012 at Noon at the Flint Golf Club. Highlights included:

- Gave approval for a 3 month trial to email and event marketing software Constant Contact.
- Approved moving website to Wordpress format and possibly adding a blog.
- Discussed speakers for the first of next year and for the Celebration of Women Event in April.
- Discussed Athena award nominees from our membership for the GRCC event in November.
- Extended the regular board meeting to append the current bi-laws.

### Women 2 Women Michigan Upcoming Events

The gals at Women 2 Women Michigan Magazine are at it again! They have joined forces with MLive Media Group to produce two of their women's events this fall.



The 15<sup>th</sup> annual Flint Journal Women's Expo will be held on Friday, October 5<sup>th</sup> and Saturday October 6<sup>th</sup> at Perani Area.



The 9<sup>th</sup> Annual Great Lakes Bay Regional Expo (combining Saginaw and Bay City Expos this year) is presented by The Bay City Times and The Saginaw News and will take place Friday, November 3<sup>rd</sup> and Saturday November 4<sup>th</sup> at Saginaw Valley State University's Ryder Center.

Both events will feature keynote speaker, New York Times Bestselling Author of Sparkle & Hustle and ABC News Correspondent, Tory Johnson.



#### Run 4 Wine

Another fun W2W event is the inaugural "Run for Wine" Event on October 11<sup>th</sup> at the Jewel of Grand Blanc Golf Course.

W2W is accepting vendors for both expos and participants for the Run for Wine event. More information can be found at [www.w2wmichigan.com](http://www.w2wmichigan.com).

Women, like men,  
should try to do  
the impossible  
and when they fail,  
their failure should be  
a challenge to others.  
-- Amelia Earhart